

visio)prime

INTELLIGENT VIDEO PROCESSING

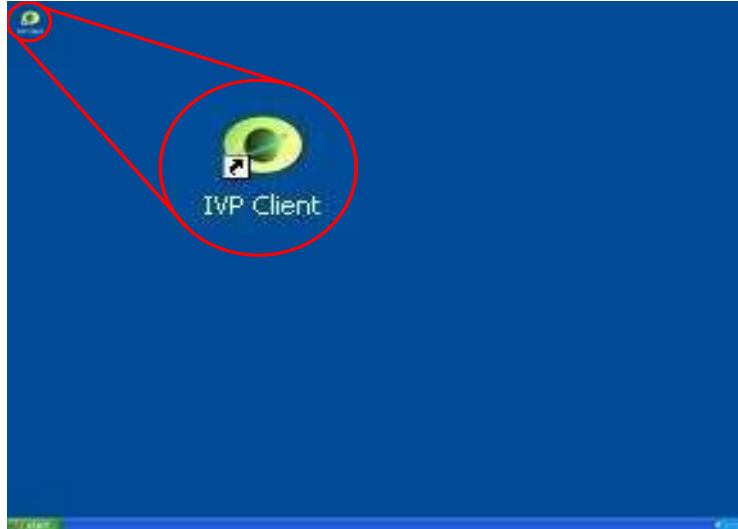


IVP Client Overview



Starting the IVP Client Software

Start the application by double-clicking on the IVP Client icon on the computer desktop.



The screen shown below will be displayed.



Enter a valid username and password and click OK. If no keyboard is attached to the server unit, you can use the onscreen keyboard to enter the required information.

NOTE:

If you are starting the application for the first time after installation, the only valid username is *Administrator*



The default username and password should be changed as soon as practical.

Operation using Default Settings

The IVP Client shows the settings of the DVR when logged on. Defaults are shown below.

Factory defaults

Attribute	Setting
Camera name	All cameras 1 to n are named "Camera n"
Recording	Enabled for all states (Always/Alarm/Motion/Sabotage)
	Quality 4
	10 IPS
	2CIF Resolution
	No inter-frame compression
Alarms	No alarms and or alarm triggers defined

Factory defaults

Attribute	Setting
VMD	Enabled for all cameras
	Sensitivity 50
	Whole image ROI
	10 second acknowledgement time
	No VMD triggers defined
Sabotage	No triggers (focus/move/obscure OFF)
	Record for 10 seconds
	10 second acknowledgement time
Schedules	None defined
Storage	Use all available fixed hard disk drives

NOTE: It is strongly recommended that you fully commission your IVP DVR installation and configure the system to make the best use of the intelligent video processing power available within the unit. In particular, you should change the password of the system administrator account.

IVP Client Primary Interface

The primary interface of the [Visioprime IVPClient](#) provides access to all the functions that an operator will use on a day to day basis.

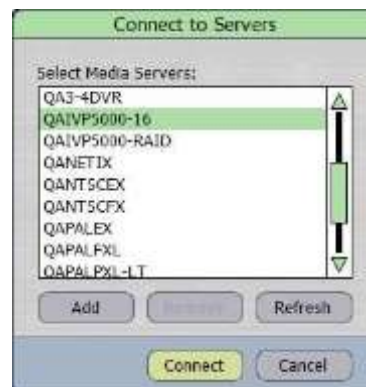


Connect to Servers

The **Select Media Servers** button on the Camera List panel opens the Select Media Servers dialog box.

NOTE:

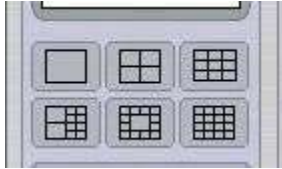
This button is only enabled when you are using the IVP Client application. IVP6000 servers cannot connect to any other networked servers.



1. From the list of available servers shown, click on the names of the servers to which you want to connect.
2. Click **OK**.

Control of the Camera View Display

The arrangement of the camera views available to you is controlled by the **Layout Mosaic** buttons on the Primary Controls panel.



Layout Mosaic

1. Click on the layout arrangement you require.

By default, the display area is blank for all mosaics when you start your IVP *Client* for the first time views on the primary interface of a Visio- or connect to a new server.

As you place camera views into a layout mosaic, each arrangement is remembered by the application. When you next log in or connect to a particular server, each mosaic is automatically populated by the camera views that you had connected when you were previously logged in.

2. If there are fewer cameras attached to your Visioprime server than tiles in the selected mosaic, the excess camera views will be blank.
3. To display all the camera views from a connected server you can drag the server name from the camera tree list onto the display area.
4. To view images from a particular camera, expand a server name in the camera tree list and drag the required camera name onto the display area.
5. If you want to display alternative camera views, “drag and drop” the requisite camera name from the into a camera view.
6. To rearrange the camera views in the layout mosaic, drag a camera view from one tile in the layout mosaic and drop it onto an alternative one.

Playback Recordings

You can play recorded images using the following methods.

- Play from a specified date and time
- Select a pre-defined playback period
- Use the playback control buttons

Place the mouse cursor over a camera view to display the playback controls.



NOTE:

When playback is paused, if your mouse has a scroll-wheel, you can use this to step through a video sequence frame by frame.

Play from a specified date and time

You can directly enter a date and time from which to start playing recorded images.

1. Click the **clock icon** in the top left hand corner of the camera view.
2. Enter the required date and time values.
3. Press the **Esc** key to cancel the change or the **Enter** key to start playback from the chosen date and time.

Select a pre-defined playback period

Use the camera view context menu to play images from 5, 10 or 30 seconds in the past.

1. Click the right mouse button to display a pop-up menu of controls specific to the camera view in which you are interested.



2. Select the required playback period.

Using the playback control buttons

Use the standard control buttons to rewind or fast-forward through recordings to view the required images.

The below table lists the playback control buttons and their action.

Button	Name	Action
<	Play Reverse	Play recorded images backwards from a selected point
⏮	Frame Reverse	Step backward, one image at a time, through recorded images
⏪	Fast Rewind	Play recorded images at a higher than normal rate in a reverse direction
>	Play Forward	Play recorded images forwards from a selected point
⏭	Frame Forward	Step forward, one image at a time, through recorded images
⏩	Fast Forward	Play recorded images at a higher than normal rate in a forward direction
📺	Live	Stop playing recorded images to show the current live image from the camera
🔒	Gang	The playback controls on one camera view apply to all camera views that are ganged together



INFORMATION: When you place the cursor over the fast-forward or fast-rewind buttons, you can select the playback speed from the pop-up menu that is displayed.



Intelligent Video Processing

IVP Client Overview

Control PTZ Cameras

If your [Visioprime](#) system is configured to use PTZ cameras, click the **PTZ** button on the Primary Controls panel.



The PTZ button activates the supported methods of controlling PTZ cameras.

- pop-up control panel



- keyboard arrow keys
- joystick



When the PTZ control panel is active, click in the required camera view to select the camera to be controlled. The camera name and the server to which it is connected will be displayed in the text box at the top of the PTZ control panel.

NOTE:

Preset and speed control buttons for PTZ movement can be applied using the pop-up control panel. The speed of camera movement may also be changed using the number keys of your keyboard and presets may also be selected from the keypad of the [Visioprime](#) joystick.

The joystick can also control the mouse cursor of the IVP *Client*. The **Select PTZ** button toggles whether the joystick controls the mouse cursor or the PTZ camera.

Print and Save Images

You can instantly either print or save images that you see on the screen by pressing the appropriate buttons on the lower control panel.



(Print)



(Save)

NOTE: The number of images printed or saved depends on the layout mosaic you have selected for the camera views. There will be a printed page or a saved file for each tile in your selected layout mosaic.

Print images

Send images from all displayed camera views to any printer connected to your network.

1. Click the **Print** button to open the standard Windows Print dialog.
2. Select the appropriate network printer.
3. Click **OK** to print a separate page for each tile displayed.

Save images to file

Send images from all displayed camera views to the operating system drive of your [Visioprime](#) system.

Click the **Save** button to automatically save a file

Server name_Camera name_DD-MM-YYYY_hh-mm-ss.jpg

to the C:\My Documents\My Pictures directory for each tile displayed. A copy of the file is also placed in the Export list so that the saved images can be stored on a CD.

Change System Configuration

You can change recording parameters and operational settings for your IVP6000 via the IVP Client by selecting the required task from those listed on the Configuration selection interface.

Open the Configuration selection interface by clicking the **Configuration** button and then choose the required task from the options available.



[Intelligent Video Processing](#)

[IVP Client Overview](#)

Export Video Sequences

The Visioprime IVP *Client* allows you to export recorded video sequences to either a CD or DVD. You can export data in Visioprime's native file format or AVI format to CD or DVD. The proprietary **IVP Player** application can be exported with the data to allow the video sequences to be viewed on any computer with a CD or DVD reader installed.



1. Click the **Export** button to open the Export interface.
2. Select the required server.
3. Select the camera from which you want to export.
4. Enter dates and times for the start and end of a sequence.
5. Click **Add Sequence to Export List**.
6. Repeat these steps 3 - 5 for any other sequences required.
7. **Select destination drive** from the list of those available.
8. Click **Export**.



Unit 39
Sir Frank Whittle Business Centre
Great Central Way
Rugby
Warwickshire
CV21 3XH

www.plettac.co.uk

